

# THE IDEAL MODULE FOR LAMINATING & PROTECTING CARDS

Agilia, Evolis retransfer card printer, can be associated with an Evolis Card Lamination Module (CLM), to become an all-in-one solution to print, encode, and laminate cards in a single-pass. This system combines the best printing quality offered by Agilia Retransfer technology, with the durability and security thanks to the Lamination technology. As a result, your ID cards can be used for up to 10 years and are highly tamper-resistant.

## INCREASED CARD PROTECTION

Lamination films add an additional level of protection on your printed cards, to prevent whether from premature wear (due to friction or UV light) or copies, fraud and counterfeiting.

## COMPLETE RANGE OF LAMINATES

A complete range of patches and varnishes, with or without holograms is available.

Custom laminates can be developed on-demand for special projects or specific applications.

All our patches and varnishes are available in large quantity formats, allowing for maximum system uptime.

## EASY TO USE

Simply associate a Card Lamination Module for Agilia to an Agilia retransfer printer to create an all-in-one system. Without replacing your printer, you can easily upgrade it with a lamination station.

## ASSURED PRODUCTIVITY

In a single operation, Agilia and the CLM can encode various type of cards (magnetic stripe, contact or contactless smart cards), print them using retransfer technology, and laminate them in one pass. Agilia and the CLM can work in "parallel mode" to print and laminate cards at the same timing, for maximum efficiency.



# MAIN FEATURES

## OVERALL

- Single and dual-sided lamination
- Built-in card flattener included

## LAMINATION SPEED

- Single-sided: up to 132 cards/hour
- Dual-sided: up to 90 cards/hour

## CARD MANAGEMENT

- Card feeder capacity (from Agilia): 200 cards (0.76 mm - 30 mil)
- Output hopper capacity: 100 cards (0.76 mm - 30 mil)
- Reject hopper capacity (from Agilia): 10 cards (0.76 mm - 30 mil)
- Card thickness: 0.76 mm - 30 mil
- Types of cards: PVC cards, composite PVC cards, PET cards, polycarbonate (PC) cards, ABS cards
- Card format: ISO CR80 - ISO 7810 (53.98 mm x 85.60 mm)

## CONNECTIVITY

- Infra-red kit included

## SECURITY

- Support for Kensington® security lock

## DISPLAY

- LEDs
- Visual notifications: cleaning alerts, ribbon nearly/entirely consumed alerts, etc.

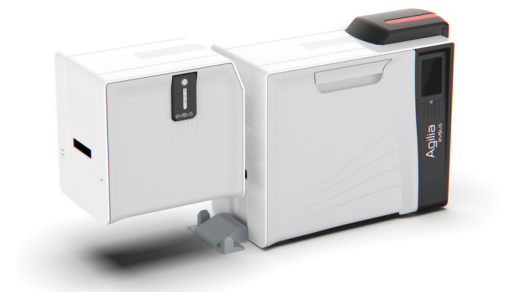
## EVOLIS HIGH TRUST FILMS (recommended for maximum quality, reliability and performance)

- Automatic detection and configuration
- Color matching for easy installation
- Available films:
  - Clear patch (0.5 or 1 mil\*): 600 sides/roll
  - Holographic patch (0.6 or 1 mil): 600 sides/roll (generic or custom)
  - Patch with cut-outs for contact smart cards (0.5 or 1 mil\*): 600 sides/roll
  - Alternating 1 mil clear patches\* for dual-sided cards: 600 sides/roll
    - - Full coverage/Magnetic stripe cut-out
    - - Contact smart card cut-out/Full coverage
    - - Contact smart card cut-out/Magnetic stripe cut-out
  - Transparent varnish: 1200 sides/roll
  - Continuous hologram varnish: 1200 sides/roll (generic or custom)
  - Registered hologram varnish: 1200 sides/roll (generic or custom)
  - Other films available on request

\* Not recommended for PVC cards.

## DIMENSIONS

- CLM alone:
  - Dimensions (H x W x D): 270 x 274 x 205 mm (10.63" x 10.78" x 8.07")/270 x 370 x 205 mm (10.63" x 14.56" x 8.07') including output hopper
  - Weight: 5.90 kg (13.00 lbs)
- Agilia and CLM:
  - Dimensions (H x W x D): 373 x 719 x 205 mm (14.65" x 28.31" x 8.07")/373 x 815 x 205 mm (14.65" x 32.09" x 8.07')
  - Weight: 15.6 kg (34.39 lbs)



# AAMSCO